



HOOKCAM[®]

It's a camera on the Hook

**HookCam[®] provides Sight
Designed for Safety: Pays Back in Productivity**

HookCam[®] A Suite of Camera Safety and Productivity Tools



HookCam for Tower Cranes

HookCam™ is a Safety Camera mounted on Hook, Boomtip or Trolley of a crane. It transmits a wireless, real-time video to the operator..

Generally, installation follows the company patent of A to B to C, that being a wireless transmission from Hook to Trolley Relay to Cab. We also offer a Remote Viewing Option.



View from 100m Pendulum Mount #2 Rocks at 11m

What is Important

- ◆ In 2002 HookCam created the Hook Camera Market
- ◆ Our Mission: Construction Safety & Customer Support
- ◆ We patented, manufacture, sell & service HookCam
- ◆ We offer continuous Innovation and 24/7 Support
- ◆ We solve problems, mitigate risk & reduce expense
- ◆ Dedicated Safety and Productivity Professionals

Monitor Features

- ◆ AWB: Automatic white balance. Critical, fast digital switch between sun and shadow
- ◆ Camera samples 1K/second & seamlessly adjusts video for optimal brightness and resolution.

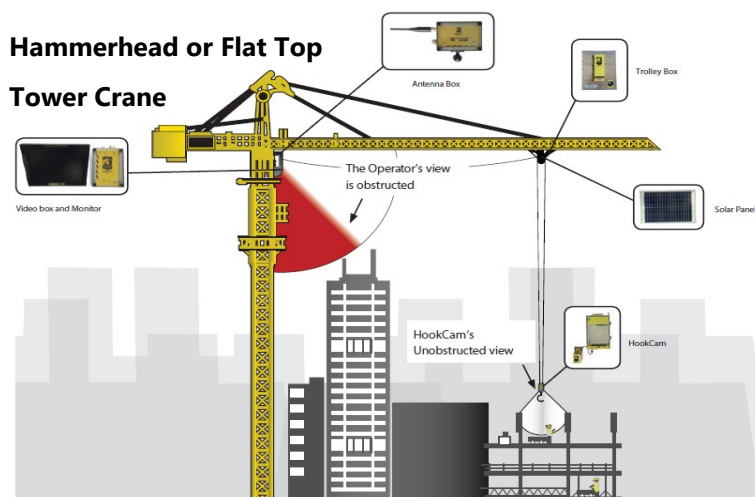
Camera Features

State of the art, hi resolution, day night camera

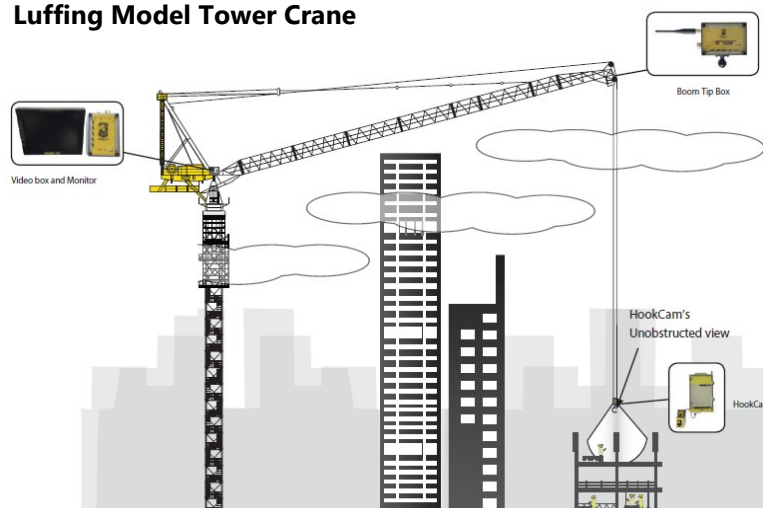
- ◆ **Color chip quickly adapts to sun and shadow**
- ◆ Day Night .001Lux
- ◆ 4:3 Aspect Ratio
- ◆ Attaches safely with 600lb-pull, switchable magnet
- ◆ 1:700 Contrast Ratio, 1,000 nits Brightness



Video Transmittal Configurations



Luffing Model Tower Crane



Battery Technology

- ◆ Chemistry: Rechargeable LiFePO4
- ◆ Safest of the Lithium Chemistries
- ◆ Power: 12V 11.2ah / 10-14 hours
- ◆ Ships IATA UN3480 PI 965 Hazmat
- ◆ Lithium Content by weight: <2%
- ◆ System Provision: Two Batteries, One Battery Charger
- ◆ Weight: 4.5 pounds (2.2kg)
- ◆ Measure: 8.25x 3.5 x 2.25" (39.9 x 8.9 x 5.7cm)



Alternative Power

- ◆ Monitor: 12/24DC Conversion or 110/115AC (US) or 220V 50 Hz (EU). Will operate on 9 to 27 volts.



Site Cameras

HookCam offers 8 Megapixel Site Cameras with multiple mounting options. Site cameras have a variety of features. Select some or all:

- 32X Zoom 18 Month Storage Remote Viewing
- 72 Hr Loop Text on Motion 10 Tb Storage
- Time Lapse Import to Smart TV Up to Six Users

Mounting Options

- ◆ Mount Camera(s) on Tower Crane Mast
- ◆ Mount Camera(s) on Fence or Post
- ◆ Mount Camera(s) on Adjacent Building
- ◆ Mount to View Income Deliveries
 - ◆ Retain Archival Footage
 - ◆ Take Still Photos Upon Motion (Text Alert)

Uses

- ◆ SubContractor Billing
- ◆ Job Site Status Reports
- ◆ Confirm Completion
- ◆ Report Rain Delays
- ◆ Store 18 mo. of Data
- ◆ Report Readiness
- ◆ Confirm Crane Usage
- ◆ Confirm Start / Stop

Performance

8 Megapixel Camera

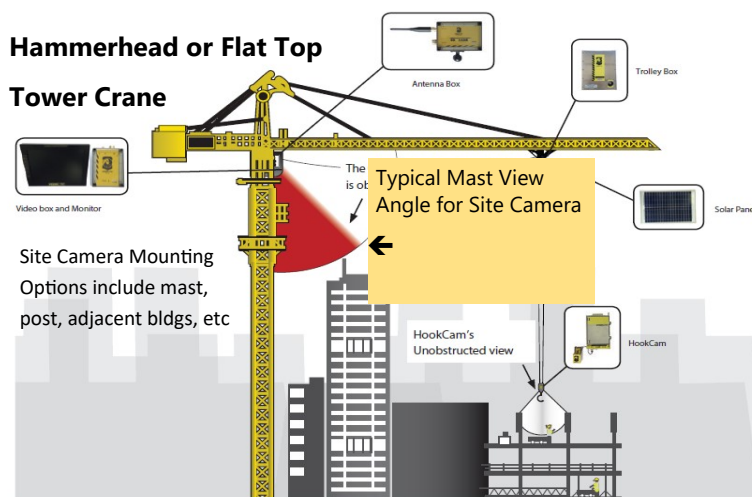
- ◆ Up to 6 Users Can Independently Zoom
- ◆ 8 Megapixel is equal to 8K TV (3840x2160 pixels)
- ◆ Below is a comparison of 8 vs 2mp at 75 feet



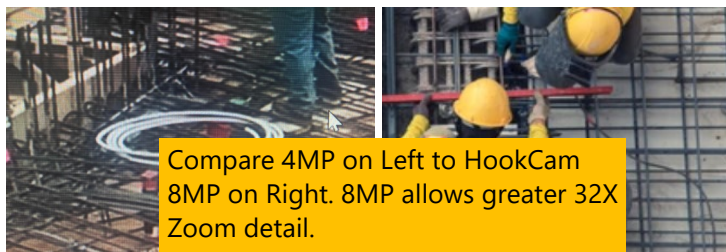
- ◆ Detailed enough to identify rebar ties
- ◆ Meeting, Planning, Work Assessment
- ◆ ID Workers, Trades

- ◆ 18 months' storage of time lapse progress report

Video Transmittal Configurations



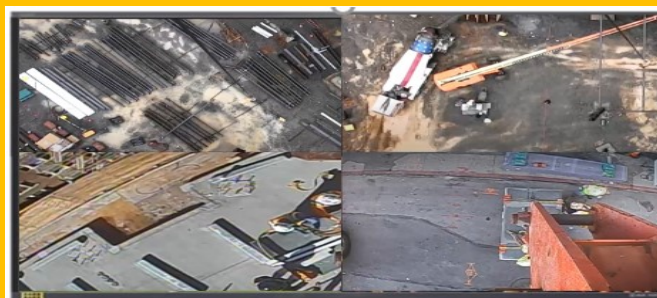
Site View from Mast



Bundle HookCam Safety Camera Mounted on Block of Hammerhead or Flat Top with our 8MP Site Camera. Both systems provide 72 Loop Recording. Our Site Camera will provide multiple services referenced in the gold, highlighted box above left. Among them is our popular time lapse with 18 months' free storage.

Turn Key Viewing

- ◆ One Vendor: Site Cam & HookCam
- ◆ Trusted Name in Safety since 2003



View on phone, desktop, laptop or choose HookCam's 42", 55", or 65" Pre-Programmed, LED Display of streamed, Site or HookCam Views.

HookCam makes every pick safer and pays for itself with Productivity. You have our name on it.



Crawler and Mobile Cranes



Typical View

Chains at 30 feet,
Boomtip at 180 feet

Benefits

- ◆ No More Blind
- ◆ Improve communications
- ◆ Focus on safety and productivity
- ◆ Minimize language and newbie errors

The HookCam™ for Crawlers

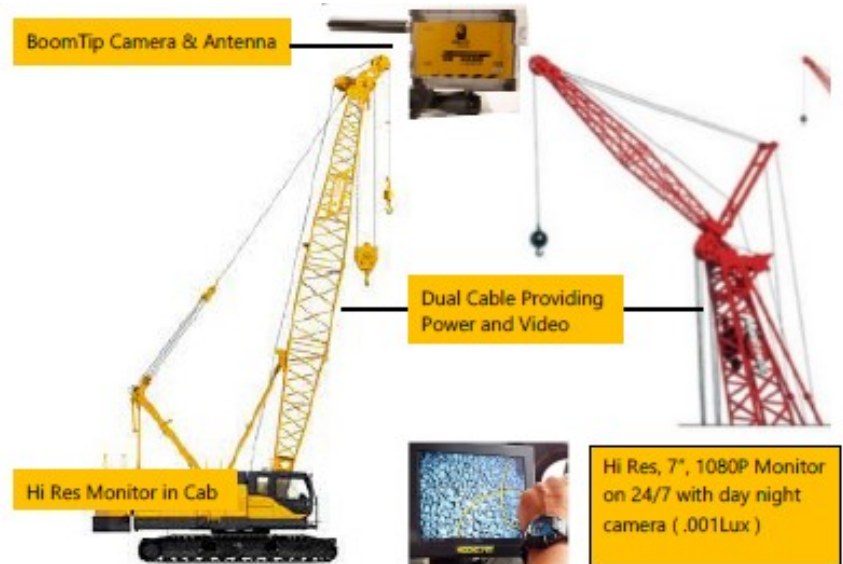
The HookCam™ for Lattice Boom and Knuckle Boom Cranes provides a boomtip camera with a wired Siamese cable to the cab. No battery required.

Monitor Features

- ◆ On 24/7. Passive Quick-Glance Technology
- ◆ Automatic White Balance (AWB). Critical, fast digital switch between sun and shadow
- ◆ Camera samples 1K/sec & seamlessly adjusts

Camera Features

- ◆ **State-of-the Art high resolution day/night camera quickly adapts sun to shade**
- ◆ Day Night .001Lux
- ◆ 4:3 Aspect Ratio
- ◆ Attaches safely with 600lb-pull, switchable magnet
- ◆ 1:700 Contrast Ratio, 1,000 nits Brightness
- ◆ VGA, S-Video and BNC loop thru



What is Important

- ◆ Every Pick is Safer with HookCam
- ◆ In 2002 HookCam created the Hook Camera Market
- ◆ Mission: Construction Safety & Customer Support
- ◆ Patented, Manufactures, Sells & Services HookCam
- ◆ Continuous Innovation and 24/7 Support
- ◆ We solve problems, mitigate risk & reduce expense

Easy Installation

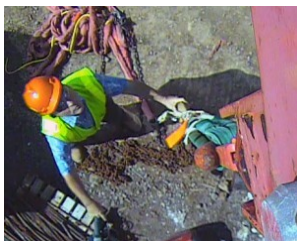
- ◆ Delivered as 3 parts in one carton (24x17x8")
- ◆ Remove and desk-check on work bench
- ◆ At the site, use switchable magnetic mount for boomtip attachment of antenna & Camera
- ◆ Run wire from antenna at either knuckle or boomtip to the cab
- ◆ Mount antenna on cab rooftop, connect wire
- ◆ Mount LED on glass using suction mount
- ◆ Plug wire from rooftop to cab
- ◆ Power (9-27volt). Leave Monitor on 24/7
- ◆ Turn on system from cab

Alternative Power

- ◆ Solar or Battery can be supplied as power source



Overhead Cranes



Typical View

View from chain length

Benefits

- ◆ See in the Blind; Improve Communications
- ◆ Focus on Safety and Productivity
- ◆ Distinguish Safe Areas and Load Areas

The HookCam™ for Overhead & Gantry

The HookCam™ for overhead cranes typically mounts the camera on the trolley. A choice of lenses provides targeted view. Signal transmission to the cab can be wired or wireless. Camera and Antenna mounts are magnetic

Monitor Features

- ◆ On 24/7. Passive Quick-Glance Technology
- ◆ Automatic White Balance (AWB), critical, fast digital switch between sun and shadow
- ◆ Camera samples 1K/sec & seamlessly adjusts

Camera Features

State-of-the-art, hi resolution, day/night camera

- ◆ **Hi-Res Camera quickly adapts sun to shade**
- ◆ Day Night .001Lux
- ◆ 4:3 Aspect Ratio
- ◆ Attaches safely with 600lb-pull, switchable magnet
- ◆ 1:700 Contrast Ratio, 1,000 nits Brightness
- ◆ VGA, S-Video and BNC loop thru



What is Important

- ◆ Every Pick is Safer with HookCam
- ◆ In 2002 HookCam created the Hook Camera Market
- ◆ Mission: Construction Safety & Customer Support
- ◆ Patented, Manufactures, Sells & Services HookCam
- ◆ Continuous Innovation and 24/7 Support
- ◆ We solve problems, mitigate risk & reduce expense

Installation

- ◆ Delivered as 3 parts in one carton (24x17x8")
- ◆ Remove and desk-check on work bench
- ◆ At the site, use switchable magnetic mount for trolley attachment of antenna and camera
- ◆ Run wire from antenna along the girder to the cab
- ◆ Mount antenna in or on cab. Connect wire
- ◆ Mount LED on glass using suction mount
- ◆ Plug wire from rooftop antenna to cab
- ◆ Power (9-27volt). Leave Monitor on 24/7
- ◆ Turn on system from cab

Alternative Power

- ◆ Solar or Battery can be supplied as power source



HookCam® Add-On Services

The below services are add-on service options for the HookCam® system. The services below require a HookCam® system to use.

	Remote Viewing	Analytics	Service Suite
Remote Viewing	✓	✓	✓
HookCam® Analytics & Reporting		✓	✓
Remote Diagnostic Services			✓
Advanced Parts Replacement			✓
Data Plan (Up to 100GB/month)*	✓	✓	✓
Modem	✓	✓	✓

- *HookCam® services require a modem and data plan.
- *Performance based on cell service. Please enquire about details.
- *All prices subject to change

For more information contact sales@scaleandcontrol.com

HookCam® Remote Viewing

HookCam is first an operator's safety tool.

OSHA explained, "HookCam makes every pick safer."

Traveler's Insurance said, "HookCam probably safely increases productivity 25%."

But HookCam engineers knew there was more they could do. "We have the most desirable real estate on today's construction site," said patent holder, Chris Catanzaro. "We are on the hook of the crane".

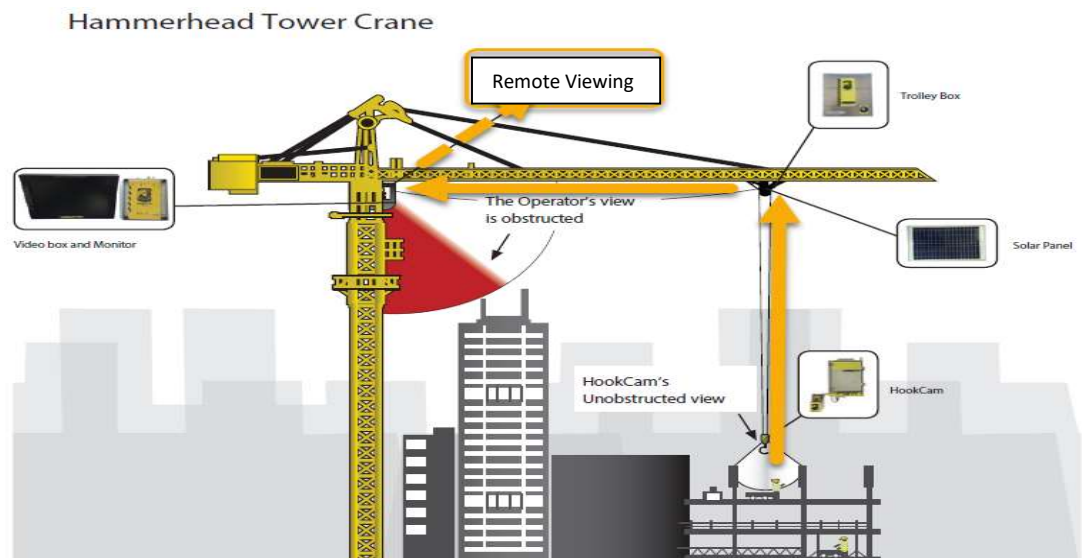


When managers began to ask if we could share the view, we began work to deliver the operator's view to a password protected desktop and later, iPad, iPhone and laptop.

Today, we split the signal because bandwidth is always under assault. We give priority to the operator and send the same livestream to an authorized viewer. Up to six remote viewers can be added to a list of approved managers who can view the live footage.

HookCam added a 72-hour loop where time is measured by the battery being in the hook box. For a site that runs 12 hours per day and removes the battery, the clock stops running, so a 72-hour look will provide 3-5 workdays and then record over itself. If there is an incident, the footage likely can be retrieved.

- Remote viewing is available to managers when view is available to operator
- Live Stream to any web connected device
- Remote Viewing is an add-on, subscription service of HookCam
- HookCam activates an internet connection via its AT&T contract
- Management can add up to six users and can change passwords
- List up to six usernames and HookCam will issue passwords
- Signal is encrypted and password protected
- No additional equipment is required
- The monitor is remote viewing equipped
- 72-hour loop of video archive



HookCam® Analytics

HookCam® is designed to eliminate communication issues when operating in the blind.

HookCam® gives the operator a second set of eyes allowing them to better communicate with the rigger and respond to critical situations.

With the HookCam®, the operator has more control of risks on the job site, can move safety and efficiently



HookCam® provides you with all the metrics you need to keep your job site running smoothly and efficiently.

With daily reports, archived video footage and crane uptime as well as many more reports generated by data, HookCam® gives you the full overview!

For more information contact sales@scaleandcontro.com



HookCam LLC is a US-based manufacturer of specialty safety camera equipment for the manufacturing and construction industries. “Every lift is safer with HookCam.”

Our founders were experts in wireless and could manage both wired and wireless technology. “We integrated systems from the crane’s hook, boomtip or trolley to the operator. We named our invention: HookCam. The US Patent office gave us our own category: Crane Safety Cameras,” says founder, Chris Catanzaro.

Our patent holder-inventor and his team are still with the company and always able to answer product-knowledge and application questions for our customers. We have a mutual interest in safety.

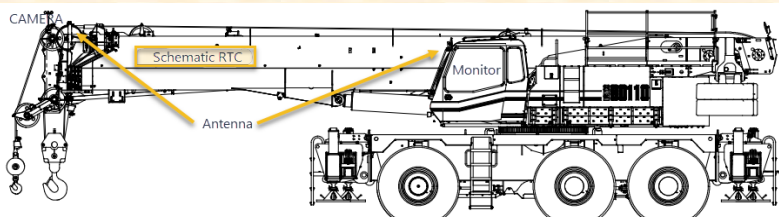
We march to a tune, “Give ‘em sight with HookCam. Every pick is safer with HookCam.” Our customers know HookCam is first and foremost a safety device, but they soon learn it pays for itself in savings. “We save time, money and increase both safety and communication”. HookCam makes every pick safer and pays for itself with productivity. So, if budget is also on your mind: Think of HookCam.

We provide cameras to the US Navy; US Army, Department of Defense, Homeland Security, and top construction contractors and manufacturers around the world.

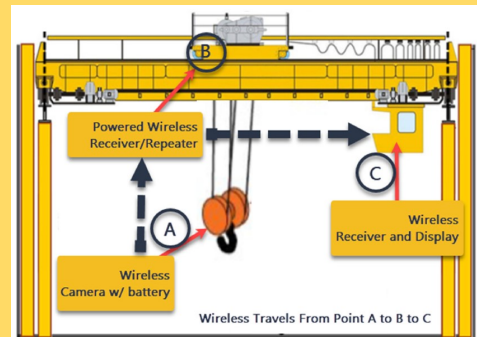
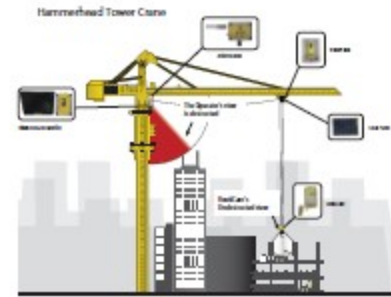
In our continuing effort to lead the industry, we added artificial intelligence and image ID to our product mix. That gives managers the management information they seek. Think of it: Safety, communications, sight, data and management information in one device.

Our Mission: Provide increased safety and improved communication for every crane-site and user. HookCam will always strive to make the most reliable, easy-to-use, safety camera in the industry.

Call for a quote. Make your site safer, more productive with HookCam.



About Us



Distributed by:



www.scaleandcontrol.com
sales@scaleandcontrol.com
888-239-0552