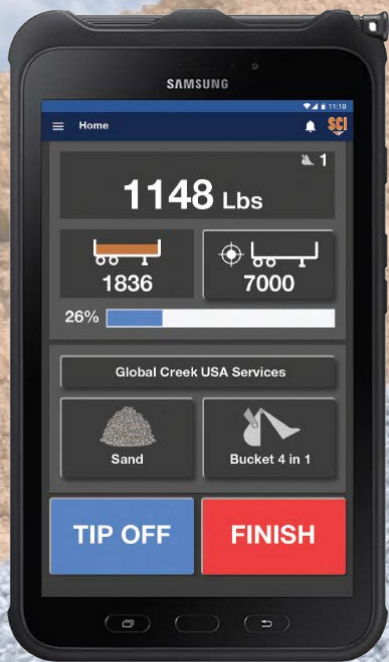




WLS555 Weigh On The Move Wheel Loader Scale

Designed for use with
Wheel Loaders, Compact Wheel Loaders & Skidsteers



**Use Tablet
or Smartphone
as the Display**



**Scale Reads Hydraulic
Pressure From Boom
Lift Cylinders to Show
Weight**



**IP 67 Wash down
Rated Electronics
Wireless communication
to Display**

- Standard data logger records load data capturing 19 fields of data
- Onboard printer option, remote viewer option, PDF Ticket Option
- Designed for self installation, backed by our 7 days a week phone support
- Track customers, materials and attachments

Scale and Control Inc. Toll Free Tel: 888-239-0552.

E-mail: sales@scaleandcontrol.com

Web: www.scaleandcontrol.com



WLS555 Loader Scale Features & Benefits

WLS555 Features & Benefits

- Weigh on the move technology allows you to weigh with the wheel loader moving, which increases productivity
- System comes standard with a ruggedized tablet as the display or a lower cost non ruggedized tablet
- 8” viewing area is largest on the market
- Users can as well use their Smartphone or own tablet as the display
- System can be user installed and calibrated
- User login and access rights
- Track multiple attachments, materials, and customer data
- Extensive logging capabilities
- Easily view advanced diagnostics
- English, Spanish, and French language options
- Optional add-ons including printer, networking and more
- Designed and manufactured by Scale and Control Inc.
- Monitor hydraulic pressure with a +/- 1% error of the machines static full turn tip load capacity

Standard Data Logger Feature

	A	B	C	D	E	F	G	H	I	J	K	L	M	N	O	P	Q	R	S
1	Operator	Date Time	Ticket Num	P.O. Number	Truck Num	Lift Number	Load Number	Customer	Material	Attachment	Load Actual	Load Total	Units	Price	Total Price	Load Duratio	Tax	Tip Off	Zero
2	Install	9:41:41 AM	1			1	1	SCI	Dirt	Bucket	9202.102		Lbs					0:02	
3	Install	9:41:45 AM	1			2	1	SCI	Dirt	Bucket	7438.403		Lbs					0:04	
4	Install	9:41:48 AM	1			3	1	SCI	Dirt	Bucket	5943.667		Lbs					0:03	
5	Install	9:41:50 AM	1				1	SCI	Dirt	Bucket		22584.173	Lbs					0:11	
6	Install	1:40:21 PM	2			1	2	SCI	Dirt	Bucket	5943.667		Lbs					0:04	
7	Install	1:40:25 PM	2			2	2	SCI	Dirt	Bucket	6997.478		Lbs					0:04	
8	Install	1:40:30 PM	2			3	2	SCI	Dirt	Bucket	7784.529		Lbs					0:04	
9	Install	1:40:31 PM	2				2	SCI	Dirt	Bucket		20725.674	Lbs					0:14	
10	Install	2:01:28 PM	3			1	3	SCI	Dirt	Bucket	7784.529		Lbs					0:06	
11	Install	2:01:30 PM	3				3	SCI	Dirt	Bucket		7784.529	Lbs					0:08	
12																			

The WLS555 Weigh On The Move Loader Scale features a standard built in data logger where the data is stored on the controller. The system records a daily log file that can be downloaded as a .CSV file and imported into Excel for detailed load/productivity reporting.

Remote Viewer Optional Feature

The WLS555 provides users with a Remote Viewing option. If your site, has site wide WiFi or access to a WiFi hotspot, users can log into the scale from any remote location and view the scale in real time. Remote viewers can change system settings & download the data log file. This feature has an affordable annual fee per scale.



WLS555 Loader Scale Display Features

(Please go to our website to see the full 6 page brochure)

The WLS555 Loader Scale has a builtin WiFi chip that the system controller uses to provide reliable communications with the tablet, smartphone or optional WiFi printer, eliminating the need to run cables into the cab .



The WLS555 Loader Scale ships with a rugged commercial waterproof, shockproof and dustproof 8" Tablet or a lower cost Retail 8" Tablet. As well users can provide their own WiFi enabled device.



WLS555 Loader Scale Scale Components

The Scale Controller/I/O Module is IP67 washdown rated and is designed to be mounted outside of the cab providing for ease of installation. The controller sends the scale data to the in-cab display showing the load weight



We have customers install the fitting adaptors that house the pressure transducers into the lift cylinder hoses where the hoses connect to the machines hydraulic supply. The transducers send data to the controller.



Our proximity sensor plate times the speed that the bucket arm is moving at and automatically triggers the weighing cycle as the edge of the bucket arm passes by. The proximity sensors are placed 1/4" to 3/8" from the side of the bucket arm.



Scale and Control Inc. Toll Free Tel: 888-239-0552.

E-mail: sales@scaleandcontrol.com

Web: www.scaleandcontrol.com



WLS555 Loader Scale System Specifications

System Components

Trigger Options	Prox Switch / Any N.O Switch
Pressure Transducers	Dual Transducers / 3K or 5K Versions
Printer Support	YES
Temperature Compensation	Standard
Datalog Support	Standard
Connectivity Support	WiFi Standard
Display	8" Commercial Rugged Tablet or 8" Retail Tablet or Smartphone

Data Functions

Materials	200+
Customers	200+
Productivity Metrics	YES
Product Lift/Bucket Count	YES
Total Data Items	10,000+
Remote Displays	YES
Onscale Reporting	YES
Customer Data Fields	14
Material Data Fields	7
User Selectable Icons	YES

Power Requirements

Supply Voltage	8-32Vdc
Current Consumption	200mA Typ / 500mA Max

Environmental Specifications

Operating Temperature	-40°F To +158°F (-40°C To 70°C)
Storage Temperature	-40°F To +185°F (-40°C To 85°C)
Ingress Protection	IP67 / IP69 Sensors

Weighing Functions

Dynamic Weighing	YES
Tip Off	YES
Grand Total	YES
Over Target	YES
Attachments	YES
ZERO	YES

Scale and Control Inc. Toll Free Tel: 888-239-0552.

E-mail: sales@scaleandcontrol.com

Web: www.scaleandcontrol.com



WLS555 Loader Scale Printer Options

Scale and Control Inc. provides the most diverse options for Load ticket printing found in the loader scale market today.

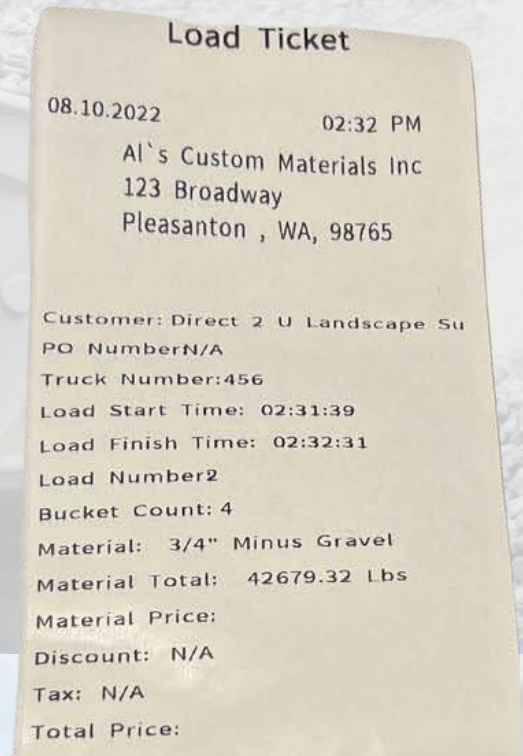
WiFi in-Cab Printers



The Brother Ruggedjet WiFi printer prints a 3" wide thermal Load Ticket. The printer receives the ticket via the WiFi signal on our scale controller so there are no communication cables to run into the cab. User's can reprint tickets by simply pressing the feed key button for each additional ticket that you require



The LTP budget friendly WiFi printer prints a 3" wide thermal Load Ticket as well. The printer receives the ticket via the WiFi signal on our scale controller so there are no communication cables to run into the cab. User's can reprint tickets by pressing on the form feed button on the printer face. This printer has a smaller roll diameter than the Brother printer.



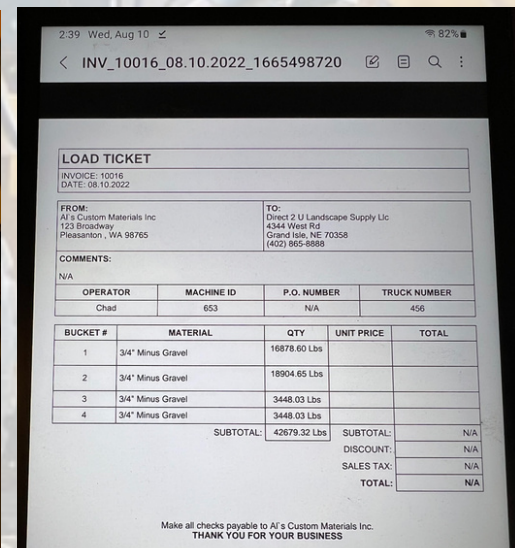
Print directly to an office IP printer:

Print directly from the WLS555 Loader Scale to an Office printer:

If your loader works within the WiFi range of your office or scale house and you have a network connected printer that we have the print driver for, we can send the load ticket directly to your office printer for delivery to the truck driver

Desktop PDF Ticket.


The WLS555 can print a PDF ticket for each load that can be downloaded to an Android Display Device. The PDF ticket can be emailed from the device or downloaded to a PC when the device is connected to a PC



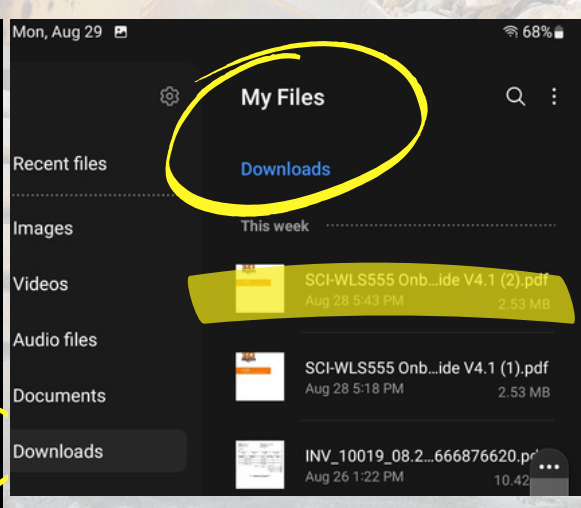
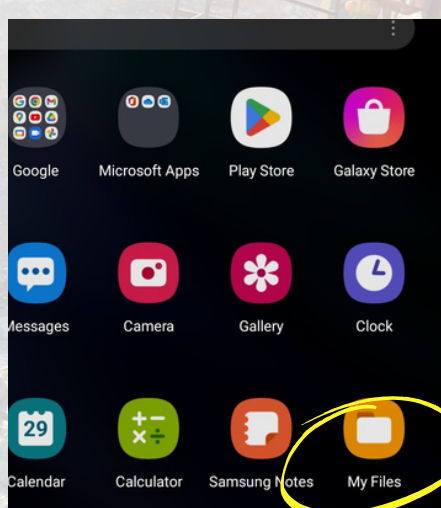
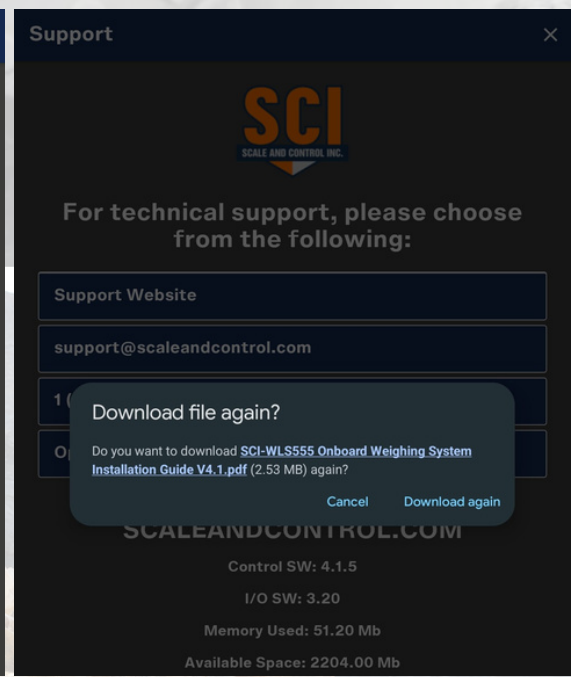
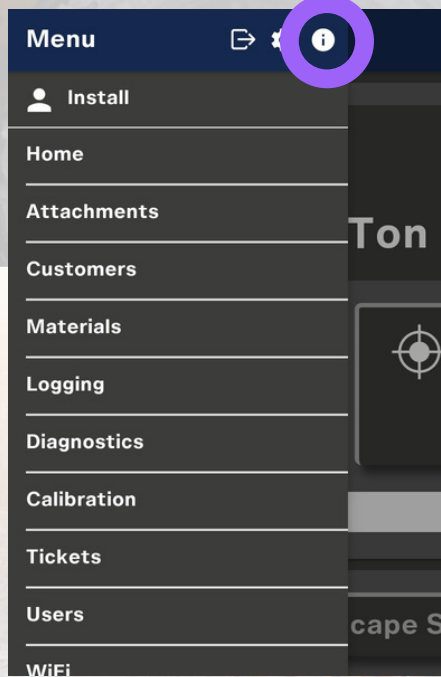


WLS555 Loader Scale

Access The Operation Manual

When your operator or supervisor needs to refer to the scale documentation for system information, the Operation Manual is available from the scale controller. The user simply clicks on the top of our main menu page, across the top there is an information icon  click on this and they can see our support page, with contact phone number, tech support e-mail and a link to download the user manual.

When you click on the manual link it will open the file and ask to you to confirm downloading the manual to the Android device. Any time the user needs to access the manual they can simply go to the MyFiles/Downloads directory on the device and open the manual by clicking on the file.





WLS555 Loader Scale

Why should you buy a Loader Scale?

You already have an in ground or above ground scale?



We have many customers that buy an SCI onboard scale for their loaders that have in ground or above ground scales, as they want the loader to load the truck to the max before it gets to the scale house, this maximizes profits and inventory sales. If the truck is overloaded when it gets to the scale house, they have to offload the excess, often this get dumped in a different location that can then derate the excess material value, and this takes time for the truck driver to off load the excess material.

You have multiple operators that run your loaders?



We talk with many business owners that buy our loader scales, as they find that there can be large discrepancies between each loader operator as to what a "FULL BUCKET" of material actually is. This can lead to giving away material, or even under supplying material and this can adversely affect profitability and customer confidence. Our loader scale provides accountability.

Scale and Control Inc. Toll Free Tel: 888-239-0552.

E-mail: sales@scaleandcontrol.com

Web: www.scaleandcontrol.com