

Date: \_\_\_\_\_ Company: \_\_\_\_\_

Contact for crane and load chart information: \_\_\_\_\_  
(Name, phone number, email address, etc.)

## Crane Information

Make: \_\_\_\_\_ Model: \_\_\_\_\_

Serial #: \_\_\_\_\_ Equipment ID: \_\_\_\_\_

Note: We will display the crane information outlined above when the Cranesmart display panel powers up. If you would like alternate information to be displayed, such as "Big Red" or "Starboard Crane", please indicate this below (maximum of 30 characters).

[illegible]

**Please email this complete form to your sales representative at [sales@scaleandcontrol.com](mailto:sales@scaleandcontrol.com) or Tel: 888-239-0552**

## General

It is important to provide complete and accurate information of the highest quality possible. If this worksheet or the provided load charts are incomplete or illegible, there will be a delay in the delivery of your system. Please contact your sales representative if you have any questions.

Indicate the electrical power available in the cab.  
(Please note that the display panel requires +12-28 VDC).

VDC

VAC

Does the crane have an enclosed cab?

Yes

No

Will the crane operate in a hazardous environment that requires hazardous area rated transmitters?

(Example: near oil or drilling rigs, refineries, fuel terminals).

Yes

No

If yes, is the cab of the crane / controls Class1, Division 2 rated?

For hydraulic booms - how many sections does the boom have?  
(Include both fixed and powered sections).

### Units

Select which units you would like your system to default to.

lb / ft

kg / m

ton / ft

tonne / m

## Language

Do you wish Spanish to be programmed as an alternative language?

Yes

No

*\*Please note that any changes to your Cranesmart system due to incomplete and / or inaccurate information may incur addition costs.*

## Hoist and Rigging

Wire rope diameter (in inches)?

Main: \_\_\_\_\_ Aux1: \_\_\_\_\_

Dead end / becket pin size (in inches)?

Main: \_\_\_\_\_ Aux1: \_\_\_\_\_

On the auxiliary winch dead end, how is the becket pinned to the headache ball?

on swivel      inside ball

Heaviest hook block weight used for each winch (in pounds)?

Main: \_\_\_\_\_ Aux1: \_\_\_\_\_

List all the reeving / parts of line the crane is capable of for each winch.

(Example: 1-10 2, 4, 6 4 only).

Main: \_\_\_\_\_ Aux1: \_\_\_\_\_

List the single line pull (in pounds) for each winch.

(Lowest between winch line pull or wire rope safe working load).

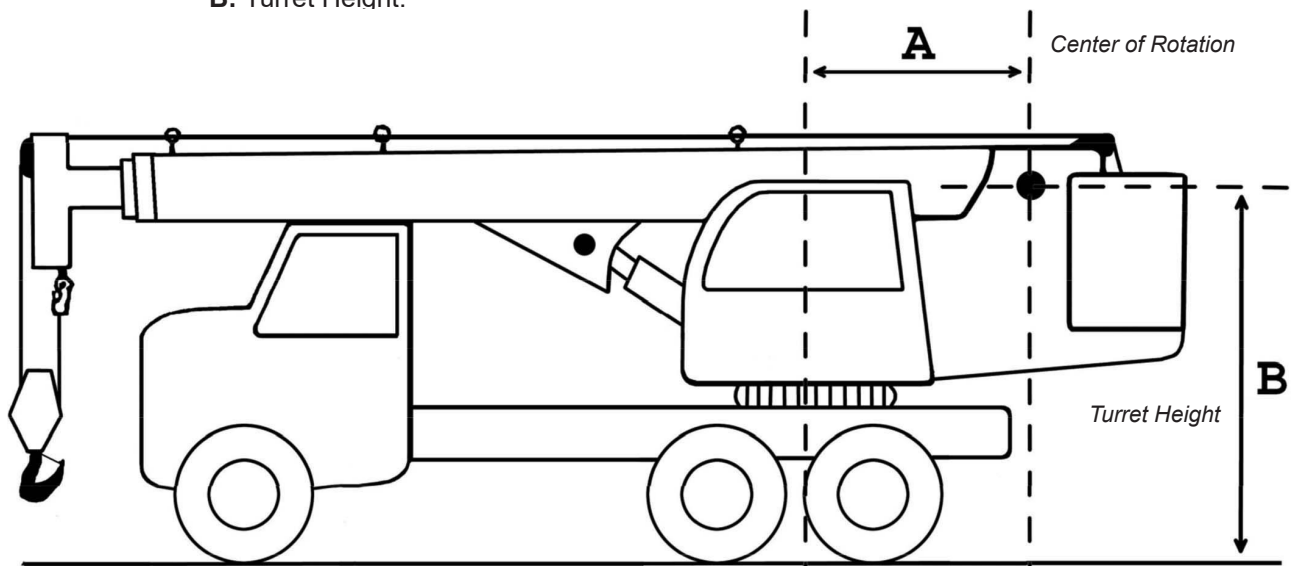
Main: \_\_\_\_\_ Aux1: \_\_\_\_\_

Is the winch located on the boom or on the body of the crane?

Boom      Body

Dimensions required: **A:** Center of Rotational Offset (CRO)

**B:** Turret Height:



Using the diagram above as a guide, answer the following questions:

### Center of Rotational Offset (CRO)

If your load chart does not have any angle values, we will need the CRO in order to calculate the angles.

(Please note that boom deflection will not be taken into account).

What is the CRO of your crane (in feet)? Refer to dimension A above as an example. \_\_\_\_\_ ft

### Turret Height

What is the turret height of your crane (in feet)? Refer to dimension B above as an example. \_\_\_\_\_ ft

### On-Tires Charts

If your crane has on-tires charts, would you like them to be programmed into your Cranesmart System?

Yes      No

If yes, please indicate the size of tires currently installed on your crane: \_\_\_\_\_

### Attachments

Please supply a clear copy from your load chart that lists and details all of the capacities and deductions that apply.

Does your crane use a jib? Yes No

If yes:

Lengths	Parts of line when in use?	Can it be used with the Main line?	Can it be used with the Auxiliary line?

Does your crane use an Extension? Yes No

If yes:

Lengths	Parts of line when in use?	Can it be used with the jib attached?	Can it be used with the Main line?	Can it be used with the Auxiliary line?

Does your crane use a Manual Section (fly or power pinned fly)? Yes No

If yes:

Lengths

Does your crane use an Auxiliary Head? Yes No

If yes:

Parts of line when in use?	Can it be adjusted at the same time as the jib or extension?	Can it be used with the Main line?	Can it be used with the Auxiliary line?

Does your crane use a Man Basket? Yes No

If yes:

Is the man basket pinned or hanging?	What is the weight of the man basket (in pounds)?	What is the capacity of the man basket (in pounds)?

### Anti-Two-Block

Do you require an anti-two-block option with this Cranesmart System? Yes No

If yes, what is the length of the counterweight chain you require? 3 feet 5 feet 10 feet

*\*Please note that any changes to your Cranesmart system due to incomplete and / or inaccurate information may incur addition costs.*

### **Crane Shutoffs**

The Cranesmart System will provide audible and visual indicators to inform the operator of an alarm condition when one occurs. The system can also control crane functions during an alarm condition with a single white wire output. This output can be '*Normally Hot*' or '*Normally Cold*' (this is a setting that can be changed in the panel).

**'Normally Hot'** - means that the white wire output provides a source of voltage during normal operation, and removes it during an alarm condition.

**'Normally Cold'** - means that the white wire output provides a source of voltage during an alarm condition, and removes it during normal operation.

Do you intend to control crane functions / solenoid valves with the Cranesmart System?	Yes	No
--	-----	----

If yes, would you like '*Normally Hot*' or '*Normally Cold*' output?

Normally Hot

Normally Cold

***Please contact the Scale and Control sales department at 888-239-0552 if you require multiple independent function shutoffs or a custom shutoff / alarm solution.***