



AI Intelligent Detection

VBV-2220C-AI-D04 front-facing AI camera

VBV-2230C-AI-D04 rear AI camera

Almost every week, cyclists and pedestrians are involved in collisions involving commercial vehicles. Many vulnerable road users are unaware of the blind spots to the front and rear of an HGV, leading to serious incidents because they have not been seen by the driver.

AI cameras are a new generation of active blind-spot detection. Using Artificial Intelligence, the cameras detect and recognize the human form within the pre-defined detection zone and reliably warn the driver visually and/or audibly before a possible collision occurs. Image processing is built-in to the camera, meaning no other hardware is required.



- **High Definition image**
- **Recognizes and alerts the driver to people in the front and rear blind-spot**
- **Detected people are shown in a colored box overlaid on the HD camera image on the driver's monitor**
- **Image processing and detected-person-overlay directly from the camera unit**
- **Plug and play:**
AI camera connects directly to the Brigade monitor and/or optional buzzer
- **Brigade Select range connectors**
- **Compatible with all Brigade HD monitors and MDR recorders**

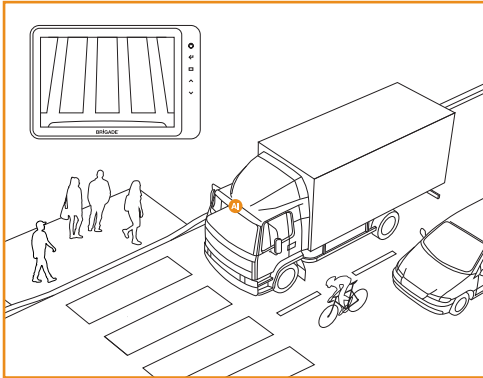
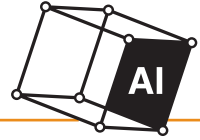
About us:

Brigade Electronics is a market leader of safety devices, with solutions to suit all commercial vehicles and mobile plant. Our complementary range of safety devices help prevent collisions by assisting the driver while protecting workers, pedestrians, and cyclists.

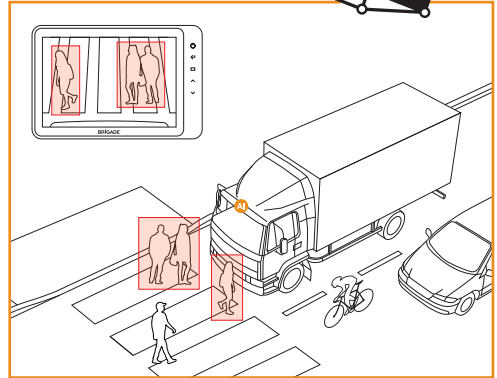
AI Intelligent Detection



Front-facing camera with pedestrian detection
Rear camera with pedestrian detection



No pedestrians in the detection zone



Detected pedestrians

AI CAMERA

VBV-2220C AI-D04
VBV-2230C AI-D04

Front-facing AI camera - normal view
Rear AI camera - mirror view

7321
7396

- 12-24Vdc
- **Camera Viewing angle:**
Front : 140°
Rear: 52°
- **AI Detection range:**
Front: Covers Class 6 area
Rear: Up to 36' (dependent on camera mounting height)
- IP69K
- **Camera Size (WxHxD)**
3.8 x 3 x 2.8 inches
- 2 years warranty

Features

- High Definition AHD 1080P
- Recognizes and alerts the driver to people in the front and rear blind-spot
- Detected people are shown in colored box overlaid onto the camera image
- Image processing and detected-person-overlay directly from the camera unit
- Plug and play:
AI camera connects directly to the Brigade monitor and/or optional internal buzzer or external alarm
- Brigade Select range connectors
- Compatible with all Brigade HD monitors and MDR recorders
- Alarm trigger output: 12V

Specifications

- 260mA @12V, 140mA @24V Imaging
- Operating Voltage: 12-24V
- TV system: 25fps
- CMOS 1/2.9" 2M Pixel sensor

Durability & Standards

- Mechanical vibration: 5.9G
- Operating temperature: -20 to +70°C / -4 to +158°F
- E-marked: UNECE R10 compliant
- CE marked
- FCC Approved
- UKCA Approved
- IC Approved

Please visit our website for more information, individual specifications, and to view our full range of safety solutions.

www.scaleandcontrol.com
sales@scaleandcontrol.com

Toll Free: 888-239-0552

