

Hoist and Rigging

Wire rope diameter (in inches)? Main: _____ Aux1: _____

Dead end / becket pin size (in inches)? Main: _____ Aux1: _____

On the auxiliary winch dead end, how is the becket pinned to the headache ball? on swivel inside ball

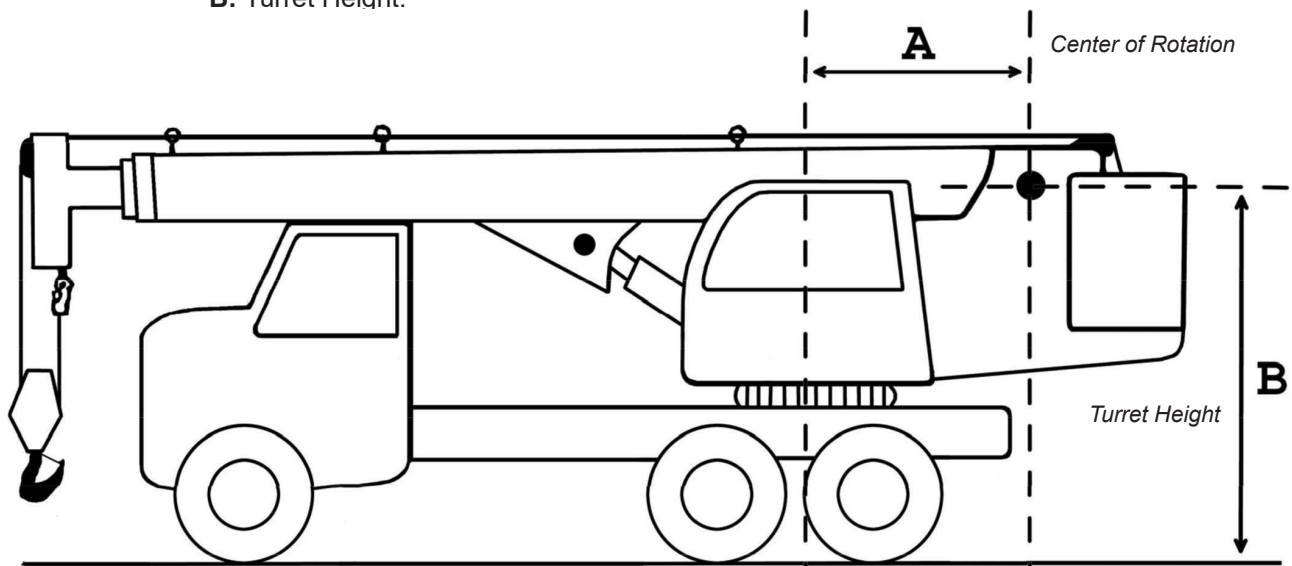
Heaviest hook block weight used for each winch (in pounds)? Main: _____ Aux1: _____

List all the reeving / parts of line the crane is capable of for each winch.
(Example: 1-10 2, 4, 6 4 only). Main: _____ Aux1: _____

List the single line pull (in pounds) for each winch.
(Lowest between winch line pull or wire rope safe working load). Main: _____ Aux1: _____

Is the winch located on the boom or on the body of the crane? Boom Body

Dimensions required: **A:** Center of Rotational Offset (CRO)
B: Turret Height:



Using the diagram above as a guide, answer the following questions:

Center of Rotational Offset (CRO)

If your load chart does not have any angle values, we will need the CRO in order to calculate the angles.
(Please note that boom deflection will not be taken into account).

What is the CRO of your crane (in feet)? Refer to dimension A above as an example. _____ ft

Turret Height

What is the turret height of your crane (in feet)? Refer to dimension B above as an example. _____ ft

On-Tires Charts

If your crane has on-tires charts, would you like them to be programmed into your Cranesmart System?

Yes No

If yes, please indicate the size of tires currently installed on your crane: _____

Attachments

Please supply a clear copy from your load chart that lists and details all of the capacities and deductions that apply.

Does your crane use a jib? Yes No

If yes:

Lengths	Parts of line when in use?	Can it be used with the Main line?	Can it be used with the Auxiliary line?

Does your crane use an Extension? Yes No

If yes:

Lengths	Parts of line when in use?	Can it be used with the jib attached?	Can it be used with the Main line?	Can it be used with the Auxiliary line?

Does your crane use a Manual Section (fly or power pinned fly)? Yes No

If yes:

Lengths

Does your crane use an Auxiliary Head? Yes No

If yes:

Parts of line when in use?	Can it be adjusted at the same time as the jib or extension?	Can it be used with the Main line?	Can it be used with the Auxiliary line?

Does your crane use a Man Basket? Yes No

If yes:

Is the man basket pinned or hanging?	What is the weight of the man basket (in pounds)?	What is the capacity of the man basket (in pounds)?

Anti-Two-Block

Do you require an anti-two-block option with this Cranesmart System? Yes No

If yes, what is the length of the counterweight chain you require? 3 feet 5 feet 10 feet

**Please note that any changes to your system due to incomplete and / or inaccurate information may incur addition costs.*

Crane Shutoffs

The System will provide audible and visual indicators to inform the operator of an alarm condition when one occurs. The system can also control crane functions during an alarm condition with a single white wire output. This output can be 'Normally Hot' or 'Normally Cold' (this is a setting that can be changed in the panel).

'Normally Hot' - means that the white wire output provides a source of voltage during normal operation, and removes it during an alarm condition.

'Normally Cold' - means that the white wire output provides a source of voltage during an alarm condition, and removes it during normal operation.

Do you intend to control crane functions / solenoid valves with the Cranesmart System?	Yes	No
If yes, would you like 'Normally Hot' or 'Normally Cold' output?	Normally Hot	Normally Cold